



## Relocation kit nozzle holder Manual

Adaption of nozzle holders to row spacing on boom sprayers.

### Intermediate and extension adaptor:



Intermediate adaptor\*  
System Lechler Twistloc  
(092.163.56.00.22.1)  
Extension: 22 mm



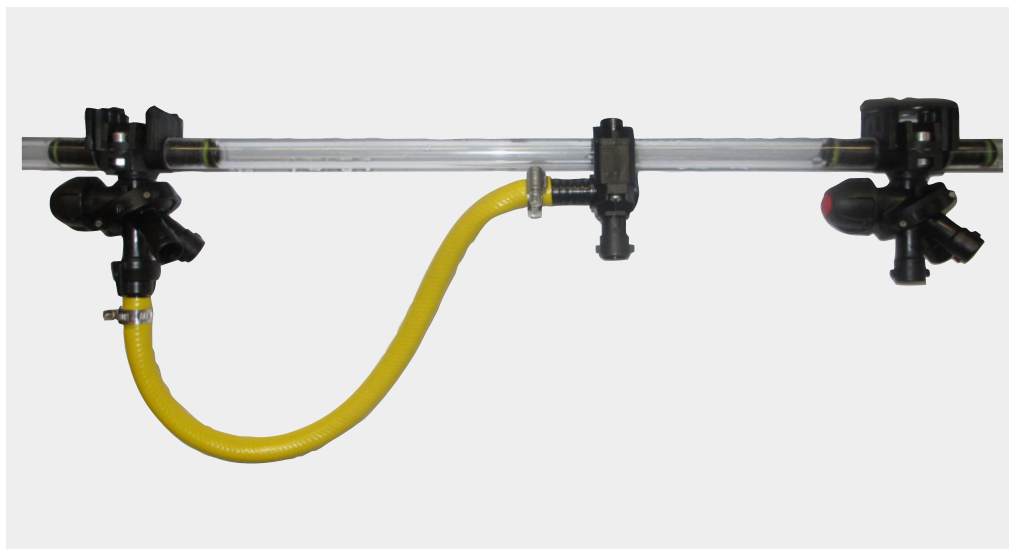
Intermediate adaptor\*  
System Rau  
(092.163.56.00.21.0)  
Extension: 43 mm



Intermediate adaptor\*  
System Hardi  
(092.163.56.00.20.1)  
Extension: 17 mm



Extension adaptor\*  
System MULTIJET  
(092.163.56.00.23.1)  
Extension: 32 mm



### Relocation kit nozzle holder arrangement on the field spray boom

Usually the spacing of the nozzle holders on fieldspray booms is 0.5 m. For utilisation in row crops it is necessary to adjust the nozzle holder to the row spacing of the crop (e.g. liquid fertilisation in maize with the hose drop system 5S).

Adjustment to row spacing: beginning at the centre of the fieldspray boom the position of the relocation kit is determined by measuring.

The number of relocation kits needed depends on the track width of the tractor.  
Calculation for 0,5 m nozzle holder spacing and 0,75 m row spacing:

- Track width 1.5 m:

$$\frac{\text{Number of nozzle holders}}{3} + 1$$

- Track width 2.25 m:

$$\frac{\text{Number of nozzle holders}}{3} \times 2$$

#### ATTENTION:

If boom is in transport position, please mind that there could be a colliding with the transport-locking device.

#### ATTENTION:

Adjust the hose clamp accessibly, for easy mounting and demounting of the relocation kit when fitted on the spray boom (remove hose after use).

#### INFO:

After use, the hose nipple with MULTIJET fitting (pos. 1-4) may stay on the spray boom.

### Required tools for assembly

- Screwdriver cross-recess
- Screwdriver blade type



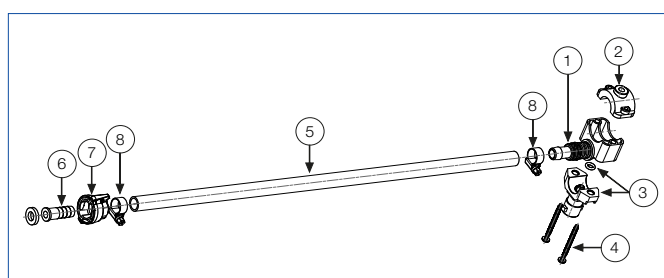
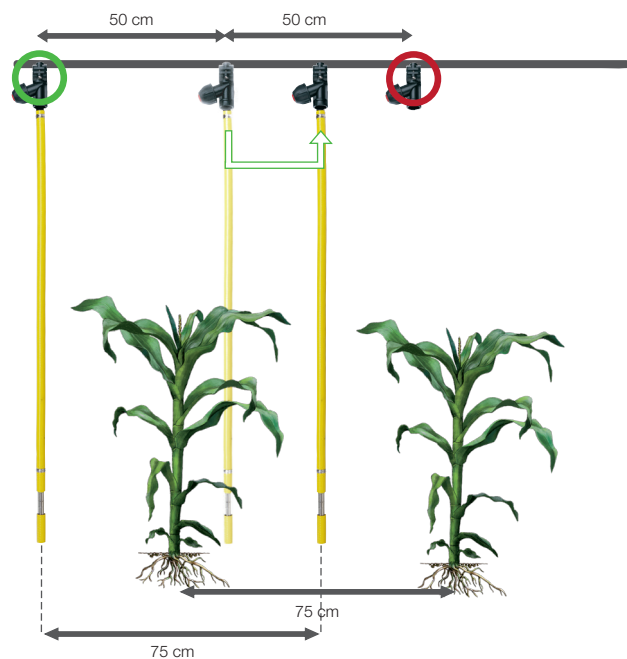
Fitting nozzle holder



Inactivate nozzle holder, e.g. with shut-off cap



Relocate nozzle holder



Pos.	Description	No.	Ordering no.
<b>1 – 8</b>	<b>Relocation kit for 1/2" / 20 mm pipe</b>	<b>1</b>	<b>092.174.00.00.00</b>
1	Hose nipple	1	
2	Stirrup for 1/2" / 20 mm pipe	1	
3	MULTIJET fitting with O-ring	1	
4	Screw	2	
5	Fabric hose NW 12,5 x 500	1	
6	Hose shank	1	095.016.56.07.49.0
7	MULTIJET-cap with a round hole and gasket (Y.G00.002.02.00.00)	1	A.402.904.10.00.00 (unit: 25 pc.)
8	Hose clamp	2	
option	Stirrup for 3/4" / 25 mm pipe		065.272.51.KL.02.3

\* incl. gasket

\*\*TWISTLOC Shut-off cap (incl. gasket 095.015.73.02.51); Ordering no.: 065.202.56.40  
MULTIJET Shut-off cap; Ordering no.: A.402.909