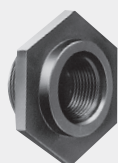




## Double nipples



## Reducing couplers



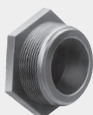
## Reducers



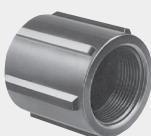
## Taper nipples



## Blanking plugs



## Couplers



Connection/thread	Order no.
1/2" NPT male	BNIP050-SH
3/4" NPT male	BNIP075-SH
1" NPT male	BNIP100-SH
1 1/4" NPT male	BNIP125-SH
1 1/2" NPT male	BNIP150-SH
1 1/2" NPT male, Length: 4"	BNIP150-4
2" NPT male	BNIP200-SH
2" NPT male, Length: 4"	BNIP200-4
3" NPT male	BNIP300-SH
1/2" NPT male x 3/8" NPT female	BRB050-038
3/4" NPT male x 1/4" NPT female	BRB075-025
3/4" NPT male x 1/2" NPT female	BRB075-050
1" NPT male x 3/4" NPT female	BRB100-075
1 1/4" NPT male x 3/4" NPT female	BRB125-075
1 1/4" NPT male x 1" NPT female	BRB125-100
1 1/2" NPT male x 3/4" NPT female	BRB150-075
1 1/2" NPT male x 1" NPT female	BRB150-100
1 1/2" NPT male x 1 1/4" NPT female	BRB150-125
2" NPT male x 3/4" NPT female	BRB200-075
2" NPT male x 1" NPT female	BRB200-100
2" NPT male x 1 1/4" NPT female	BRB200-125
2" NPT male x 1 1/2" NPT female	BRB200-150
3" NPT male x 1 1/2" NPT female	BRB300-150
3" NPT male x 2" NPT female	BRB300-200
1" NPT female x 3/4" NPT female	BRC100-075
1 1/2" NPT female x 1" NPT female	BRC150-100
1 1/2" NPT female x 1 1/4" NPT female	BRC150-125
2" NPT female x 1" NPT female	BRC200-100
2" NPT female x 1 1/4" NPT female	BRC200-125
2" NPT female x 1 1/2" NPT female	BRC200-150
3" NPT female x 2" NPT female	BRC300-200
1/2" NPT male x 3/4" NPT male	BRN075-050
1/2" NPT male x 1" NPT male	BRN100-050
3/4" NPT male x 1" NPT male	BRN100-075
3/4" NPT male x 1 1/4" NPT male	BRN125-075
1" NPT male x 1 1/4" NPT male	BRN125-100
1" NPT male x 1 1/2" NPT male	BRN150-100
1 1/4" NPT male x 1 1/2" NPT male	BRN150-125
1 1/4" NPT male x 2" NPT male	BRN200-125
1 1/2" NPT male x 2" NPT male	BRN200-150
2" NPT male x 3" NPT male	BRN300-200
3/4" NPT male	BPLUG075
1" NPT male	BPLUG100
1 1/2" NPT male	BPLUG150
2" NPT male	BPLUG200
1/2" NPT female	BCPLG050
3/4" NPT female	BCPLG075
1" NPT female	BCPLG100
1 1/4" NPT female	BCPLG125
1 1/2" NPT female	BCPLG150
2" NPT female	BCPLG200
3" NPT female	BCPLG300

## Tees



## 45° elbows



## 90° elbows



## Crosses



Connection/thread	Order no.
3/8" NPT female	<b>BTEE038</b>
1/2" NPT female	<b>BTEE050</b>
3/4" NPT female	<b>BTEE075</b>
1" NPT female	<b>BTEE100</b>
1 1/4" NPT female	<b>BTEE125</b>
1 1/2" NPT female	<b>BTEE150</b>
2" NPT female	<b>BTEE200</b>
3" NPT female	<b>BTEE300</b>
3/4" NPT female x 3/4" NPT male	<b>BSL075-45</b>
1" NPT female x 1" NPT male	<b>BSL100-45</b>
1 1/4" NPT female x 1 1/4" NPT male	<b>BSL125-45</b>
1 1/2" NPT female x 1 1/2" NPT male	<b>BSL150-45</b>
2" NPT female x 2" NPT male	<b>BSL200-45</b>
3" NPT female x 3" NPT male	<b>BSL300-45</b>
3/8" NPT female x 3/8" NPT female	<b>BEL038-90</b>
1/2" NPT female x 1/2" NPT female	<b>BEL050-90</b>
3/4" NPT female x 3/4" NPT female	<b>BEL075-90</b>
1" NPT female x 1" NPT female	<b>BEL100-90</b>
1 1/4" NPT female x 1 1/4" NPT female	<b>BEL125-90</b>
1 1/2" NPT female x 1 1/2" NPT female	<b>BEL150-90</b>
2" NPT female x 2" NPT female	<b>BEL200-90</b>
3" NPT female x 3" NPT female	<b>BEL300-90</b>
3/8" NPT female x 3/8" NPT male	<b>BSL038-90</b>
1/2" NPT female x 1/2" NPT male	<b>BSL050-90</b>
3/4" NPT female x 3/4" NPT male	<b>BSL075-90</b>
1" NPT female x 1" NPT male	<b>BSL100-90</b>
1 1/4" NPT female x 1 1/4" NPT male	<b>BSL125-90</b>
1 1/2" NPT female x 1 1/2" NPT male	<b>BSL150-90</b>
2" NPT female x 2" NPT male	<b>BSL200-90</b>
3" NPT female x 3" NPT male	<b>BSL300-90</b>
3/4" NPT female	<b>BCR075</b>
1" NPT female	<b>BCR100</b>
1 1/4" NPT female	<b>BCR125</b>
1 1/2" NPT female	<b>BCR150</b>
2" NPT female	<b>BCR200</b>

See Page 15 for more information on thread table.  
Other thread sizes on request.