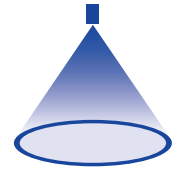


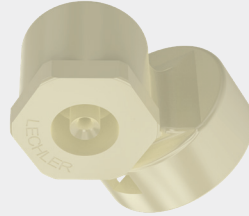
# ➤ Tangential-flow hollow cone nozzles, plastic version with bayonet quick-release system

## Series 302



### Features:

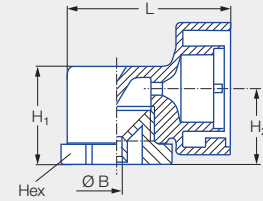
- Uniform atomization
- Non-clogging nozzle without swirl insert
- Quick and secure assembly thanks to bayonet quick-release system
- Setting of spray direction



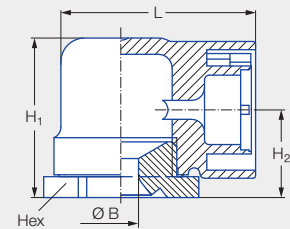
### Applications:

- Humidification of air
- Dust control
- Sprinkling
- Foam control
- Adiabatic cooling

Series 302



Type 302.32x-302.54x



Type 302.606.51.KB

Type	Code	Dimensions [mm]				Weight [g]	P <sub>max</sub> [bar]
		H <sub>1</sub>	H <sub>2</sub>	L	Hex		
<b>302.32x-302.54x</b>	<b>KB</b>	21.8	16.8	36.0	22	12.0	5.0
<b>302.606.51.KB</b>	<b>KB</b>	34.0	19.0	42.0	30	19.0	5.0

Spray angle	Ordering no.				Bore diameter B [mm]	Narrowest free cross section Ø [mm]	V̇ water [l/min]					Spray diameter D [mm] (at p = 2 bar)	
	Type	Mat. no.		Code			p [bar]					H = 250 [mm]	H = 500 [mm]
		51	56				0.5	1.0	2.0	3.0	5.0		
45°	<b>302.503</b>	●		<b>KB</b>	2.05	2.05	0.90	1.27	<b>1.80</b>	2.20	2.85	210	430
60°	<b>302.464</b>		●	<b>KB</b>	1.95	1.95	0.70	0.99	<b>1.40</b>	1.71	2.21	290	540
80°	<b>302.545</b>		●	<b>KB</b>	2.30	2.30	1.12	1.58	<b>2.24</b>	2.74	3.54	450	810
90°	<b>302.326</b>	●	●	<b>KB</b>	1.05	1.05	0.20	0.28	<b>0.40</b>	0.49	0.63	400	720
	<b>302.406</b>	●	●	<b>KB</b>	1.55	1.55	0.50	0.71	<b>1.00</b>	1.22	1.58	400	740
	<b>302.486</b>	●		<b>KB</b>	2.10	2.10	0.80	1.13	<b>1.60</b>	1.96	2.53	450	800
	<b>302.606</b>	●		<b>KB</b>	5.00	3.20	1.58	2.23	<b>3.15</b>	3.86	4.98	530	1,000
	<b>302.686</b>		●	<b>KB</b>	7.50	3.40	2.50	3.54	<b>5.00</b>	6.13	7.91	540	1,010
130°	<b>302.368</b>		●	<b>KB</b>	1.30	1.30	0.32	0.45	<b>0.63</b>	0.77	1.00	660	1,100
	<b>302.408</b>	●	●	<b>KB</b>	2.00	2.00	0.50	0.71	<b>1.00</b>	1.22	1.58	680	1,200
	<b>302.468</b>	●		<b>KB</b>	2.40	2.40	0.70	0.99	<b>1.40</b>	1.71	2.21	680	1,250
	<b>302.488</b>	●		<b>KB</b>	2.75	2.75	0.80	1.13	<b>1.60</b>	1.96	2.53	720	1,300

Conversion formula for this series:  $\dot{V}_2 = \dot{V}_1 \cdot \sqrt{\frac{P_2}{P_1}}$

Ordering Type + Material no. + Code = Ordering no.  
example: 302.503 + 51 + KB = 302.503.51.KB

Assembly accessories can be found in Chapter 9 "Accessories".