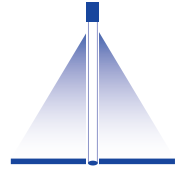


➤ Solid stream nozzles for air or saturated steam

Series 544

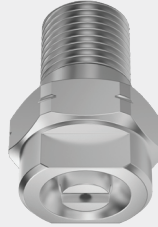


Features:

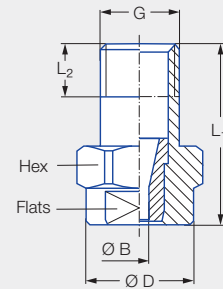
- Powerful, punctiform air stream
- Stainless steel version for higher ambient temperatures

Applications:

- Targeted blowing off and blowing out



OSHA^{®1}




Series 544

¹ Meets OSHA specifications in terms of noise level.

Code	G	Dimensions [mm]					Weight [g]
		L ₁	L ₂	Ø D	Hex	Flats	
CA	1/8 BSPT	22.0	6.5	13.0	14	10	14.0
CC	1/4 BSPT	22.0	10.0	13.0	14	10	16.0

Ordering no.				Bore diameter B [mm]	V̇ _n air [m ³ /h]				Ṁ saturated steam [kg/h]			
Type	Mat. no.	Code			p [bar]				p [bar]			
	16	1/8 BSPT	1/4 BSPT		1.0	2.0	3.0	5.0	1.0	2.0	3.0	5.0
	Stainless steel 303											
		CA	CC									
544.360	●	CA	CC	1.05	0.93	1.40	1.92	2.88	0.77	1.14	1.64	2.42
544.400	●	CA	CC	1.30	1.43	2.14	2.94	4.41	1.18	1.75	2.51	3.71
544.480	●	CA	CC	1.33	1.67	2.51	3.42	5.13	1.39	2.06	2.92	4.23
544.560	●	CA	CC	1.69	2.58	3.87	5.27	7.90	2.14	3.18	4.50	6.66
544.640	●	CA	CC	2.09	4.33	6.50	8.81	13.22	3.60	5.33	7.52	11.13
544.720	●	CA	CC	2.66	6.85	10.27	14.00	21.02	5.68	8.42	11.96	17.70
544.800	●	CA	CC	3.30	10.75	16.12	21.87	32.81	8.92	13.21	18.66	27.63

Ordering Type + Material no. + Code = Ordering no.
 example: 544.360 + 16 + CA = 544.360.16.CA

 Assembly accessories can be found in Chapter 9 "Accessories".

