

Flat fan nozzles for air or saturated steam Series 679

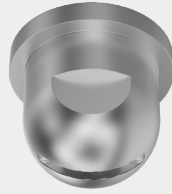


Features:

- Wide, powerful air stream
- Assembly with retaining nut
- Easy nozzle changing
- Simple jet alignment

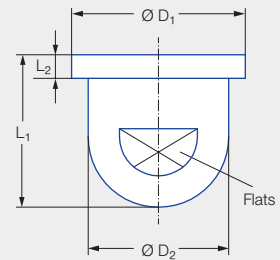
Applications:

- Blowing off liquids
- Cooling
- Heating
- Drying



OSHA¹

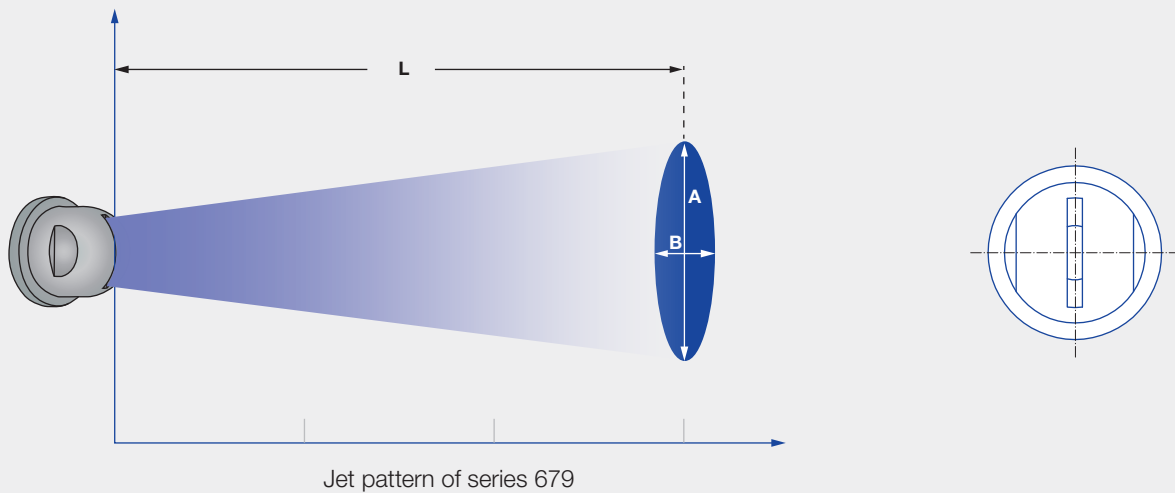
FDA²



Series 679

¹ Meets OSHA specifications in terms of noise level.

² Only applies to the stainless variant.



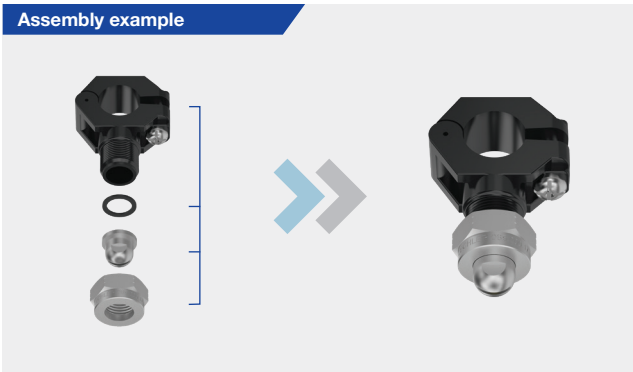
Pressure		1 bar	3 bar	5 bar
679.037	Length L [mm]	50	100	150
	A [mm]	110	260	380
	B [mm]	25	35	45
679.117	Length L [mm]	50	125	150
	A [mm]	100	250	310
	B [mm]	25	30	35
679.255	Length L [mm]	375	500	500
	A [mm]	90	190	280
	B [mm]	90	90	90

Pressure		1 bar	3 bar	5 bar
679.415	Length L [mm]	675	900	900
	A [mm]	160	300	460
	B [mm]	215	215	215
679.495	Length L [mm]	900	900	900
	A [mm]	200	425	510
	B [mm]	230	230	230

Code	Dimensions [mm]					Weight [g] (brass)
	L ₁	L ₂	∅ D ₁	∅ D ₂	Flats	
Assembly with retaining nut 3/8 BSPP	13.0	2.0	14.8	12.0	10	8.0

Spray angle	Ordering no.			Equivalent bore diameter B [mm]	V _n air [m ³ /h]				M saturated steam [kg/h]			
	Type	Mat. no.			p [bar]				p [bar]			
		17	30									
		Stainless steel 316Ti	Brass		0.5	2.0	5.0	10.0	0.5	2.0	5.0	10.0
Approx. 70°–90°	679.037		●	1.2	1.5	3.0	6.0	11.0	1.2	2.3	4.6	8.3
	679.085	●	●	1.3	2.0	4.0	8.0	14.7	1.6	3.1	6.1	11.1
	679.117	●	●	1.5	2.1	4.2	8.4	15.4	1.7	3.3	6.5	11.7
	679.165	●	●	1.8	2.6	5.1	10.3	18.8	2.0	4.1	8.0	14.3
	679.255	●	●	2.1	3.6	7.3	14.5	26.6	2.8	5.7	11.2	20.2
	679.365	●	●	2.8	6.3	12.7	25.4	46.5	5.0	10.0	19.6	35.3
	679.415	●	●	3.6	10.2	20.3	40.7	74.6	8.0	16.0	31.4	56.7
	679.495	●	●	4.3	15.6	31.1	62.2	114.0	12.4	24.8	48.5	87.6

Assembly example



Ordering Type + Material no. = Ordering no.
 example: 679.037 + 30 = 679.037.30



Assembly accessories can be found in Chapter 9 "Accessories".