

Flat fan tongue-type nozzles for air or saturated steam

Series 686



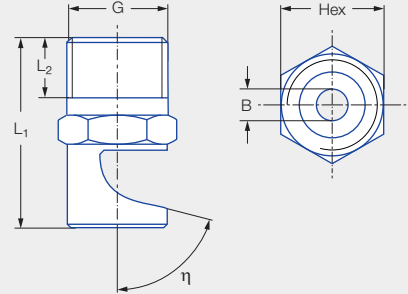
Features:

- Wide, powerful air stream
- Compact design
- Large spray width, also for short blowing distances
- Brass and stainless steel versions available for high ambient temperatures



OSHA¹

FDA²



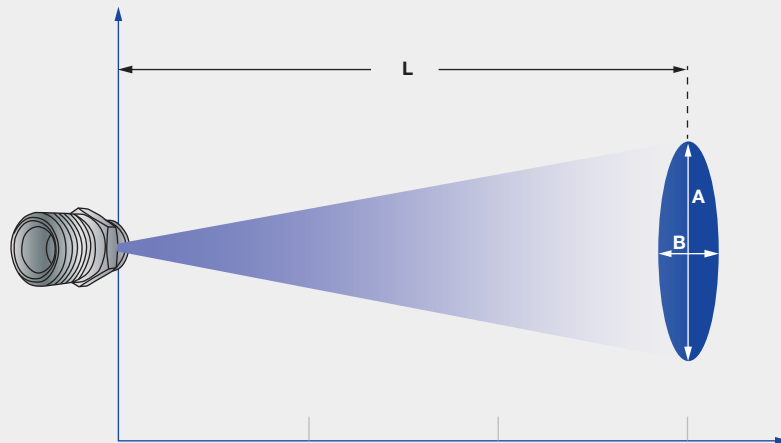
Applications:

- Blowing off liquids
- Cooling
- Heating
- Drying

Series 686

¹ Meets OSHA specifications in terms of noise level.

² Only applies to the stainless variant.



Jet pattern of series 686

Pressure		1 bar	3 bar	5 bar
686.408	Length L [mm]	40	80	125
	A [mm]	35	50	60
	B [mm]	15	40	50
686.528	Length L [mm]	60	100	150
	A [mm]	75	140	210
	B [mm]	20	40	50
686.608	Length L [mm]	90	175	250
	A [mm]	145	230	350
	B [mm]	25	45	55

Pressure		1 bar	3 bar	5 bar
686.688	Length L [mm]	150	400	525
	A [mm]	230	560	740
	B [mm]	40	80	100
686.728	Length L [mm]	180	230	375
	A [mm]	170	360	530
	B [mm]	50	50	70

G	Dimensions [mm]			Weight [g] (brass)
	L ₁	L ₂	Hex	
1/8 BSPT	23.0	6.5	11	18.0

Spray angle	η	Ordering no.				Bore diameter B [mm]	\dot{V}_n air [m³/h]				\dot{M} saturated steam [kg/h]			
		Type	Mat. no.		Code		p [bar]				p [bar]			
			16	30										
			Stainless steel 303	Brass			1/8 BSPT	0.5	2.0	5.0	10.0	0.5	2.0	5.0
Approx. 27°–47°	75°	686.408	●	●	CA	1.00	1.07	1.60	3.20	5.86	0.88	1.31	2.57	4.64
	75°	686.488	●	●	CA	1.30	1.76	2.64	5.29	9.69	1.46	2.17	4.25	7.67
Approx. 70°	75°	686.528	●	●	CA	1.50	2.2	3.31	6.61	12.13	1.83	2.71	5.31	9.59
	75°	686.568	●	●	CA	1.70	2.73	4.09	8.19	15.01	2.27	3.36	6.57	11.87
	75°	686.608	●	●	CA	1.90	3.35	5.02	10.04	18.40	2.78	4.11	8.06	14.55
	75°	686.688	●	●	CA	2.40	5.45	8.18	16.36	30.00	4.53	6.71	13.14	23.72
	75°	686.728	●	●	CA	2.70	6.88	10.33	20.65	37.86	5.71	8.46	16.58	29.94
	75°	686.808	●	●	CA	3.40	10.89	16.33	32.66	59.87	9.04	13.28	26.22	47.35

Ordering Type + Material no. + Code = Ordering no.
 example: 686.408 + 16 + CA = 686.408.16.CA



Assembly accessories can be found in Chapter 9 "Accessories".