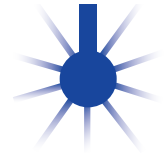
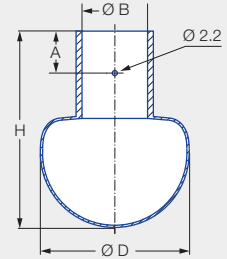
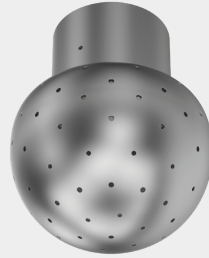


Static spray balls RinseClean Series 5B2/5B3



Features:

- No moving parts
- Self-draining
- Proven use in many applications
- Suitable for very high temperatures and hygienic requirements



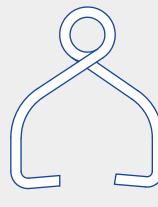
Series 5B2/5B3

With the slip-on connection, the spray ball is pushed onto the customer's connection pipe and secured with the supplied Pin.

Dimension of the slip-on connection according to DIN 10357, Series B



Pin 1



Pin 2-5

Max. tank diameter [m]	0	1	2	3	4	5	6	7	8	9
------------------------	---	---	---	---	---	---	---	---	---	---



Cleaning efficiency class
1



Max. temperature
200°C



Installation
Operation in every direction is possible



Material
Stainless steel 316L,
pin stainless steel 316L

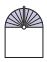




Recommended operating pressure
2 bar

Function video
www.lechler.com/staticsprayball
Or scan the QR code.





Spray angle	Ordering no.	Narrowest free cross section Ø [mm]	V̇ water [l/min]					Dimensions [mm]				Max. tank diameter [m]	
	Type		p [bar] (p _{max} = 5 bar)					Distance to bore A	Connection B	Height H	Ø D		
			0.5	1.0	2.0	3.0	at 40 psi [US gal/min]						
180° 	5B3.083.1Y.D1.80	1.2	25	35	50	61	16	9.0	18.2	42.0	28.0	1	2.2
	5B3.253.1Y.D2.20	1.8	65	92	130	159	40	18.0	22.2	84.0	64.0	2	3.0
	5B3.323.1Y.D2.80	2.3	100	141	200	245	62	18.0	28.2	84.0	64.0	3	3.5
	5B3.463.1Y.D5.20	3.3	230	325	460	563	143	25.0	52.3	111.0	90.0	5	5.4
180° 	5B3.114.1Y.D1.80	1.4	30	42	60	74	19	9.0	18.2	42.0	28.0	1	2.2
	5B3.274.1Y.D2.20	2.3	75	106	150	184	47	18.0	22.2	84.0	64.0	2	3.0
	5B3.394.1Y.D2.80	3.0	145	205	290	355	90	18.0	28.2	84.0	64.0	3	5.0
	5B3.444.1Y.D5.20	3.2	200	283	400	490	124	25.0	52.3	111.0	90.0	5	5.2
360° 	5B2.879.1Y.D0.80	0.8	8	11	15	18	5	9.0	8.2	37.0	20.0	1	2.0
	5B3.089.1Y.D1.20	1.0	25	35	50	61	16	9.0	12.2	42.0	28.0	1	2.2
	5B3.139.1Y.D1.20	1.6	33	46	65	80	20	9.0	12.2	42.0	28.0	1	2.3
	5B3.209.1Y.D1.80	1.5	50	71	100	123	31	9.0	18.2	42.0	28.0	1	2.5
	5B3.309.1Y.D2.20	1.7	90	127	180	221	56	18.0	22.2	84.0	64.0	2	3.5
	5B3.379.1Y.D2.80	2.1	130	184	260	318	81	18.0	28.2	84.0	64.0	3	5.2
	5B3.389.1Y.D4.00	2.1	140	198	280	343	87	18.0	40.3	84.0	64.0	4	5.2
	5B3.409.1Y.D3.40	2.3	160	226	320	392	99	18.0	34.2	84.0	64.0	4	5.2
	5B3.449.1Y.D2.80	3.0	205	290	410	502	127	18.0	28.2	84.0	64.0	3	5.4
	5B3.489.1Y.D3.40	2.9	255	361	510	625	158	18.0	34.2	84.0	64.0	4	5.5
5B3.499.1Y.D4.00	2.8	270	382	540	661	168	18.0	40.3	84.0	64.0	4	5.5	
	5B3.539.1Y.D5.20	3.2	335	474	670	821	208	25.0	52.3	111.0	90.0	5	5.6

Spray balls with other spray angles and connection options (various slip-on connections as well as threaded and welded connections) can be found in our brochure "Precision nozzles for tank and equipment cleaning".

Pin	Ordering no.
1	095.013.1Y.06.55
2	095.013.1Y.06.58
3	095.013.1Y.06.56
4	095.013.1Y.06.59
5	095.013.1Y.06.57

The maximum tank diameter applies to the recommended operating pressure and is meant as a recommendation only. The cleaning result is also affected by the type of soiling.

Information about slip-on connections

- Stainless steel 316L pin supplied.
- Depending on the diameter of the adapter, the flow rate can increase due to a leakage between the adapter and the spray ball.